

Engineered Conditioning Solutions

PROVEN MIXING FOR WET WELLS, PITS, & TANKS



Vaughan[®]
Unmatched Reliability

PRODUCT BROCHURE

THE VAUGHAN SOLUTION



RELIABLE SOLUTIONS FOR TOUGH ENVIRONMENTS

Solids buildup, floating mats, and grease layers can quickly reduce system performance and increase costly maintenance. Vaughan's Engineered Conditioning Solutions restore proper mixing, re-suspend settled solids, and eliminate the need for frequent vacuum truck visits or manual cleanouts.



CONDITIONING PUMP

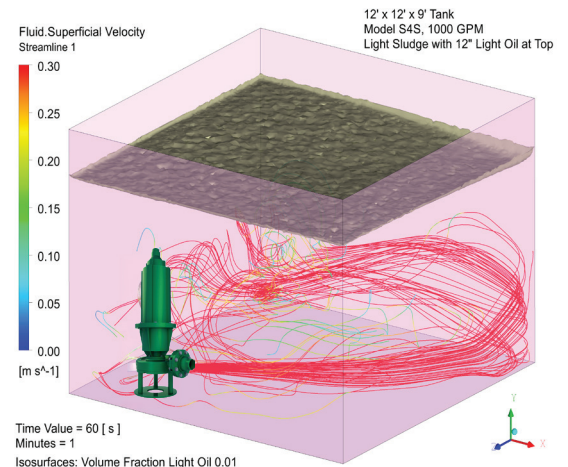
More than a submersible pump on a stand, the Vaughan Conditioning Pump is an engineered mixing system built on our proven Chopper Pump technology. Engineered to suit multiple orientations and site conditions, it's a flexible, purpose-built solution that adapts to a wide range of conditioning applications. Each system delivers powerful recirculation and solids reduction, creating a homogeneous, pumpable mixture that improves reliability and reduces maintenance.



ENGINEERED THROUGH CFD ANALYSIS

BACKED BY ADVANCED ENGINEERING

Every conditioning system we design is supported by Vaughan's decades of in-house Computational Fluid Dynamics (CFD) expertise. Our engineering team uses CFD modeling to optimize nozzle configurations, mixing patterns, and flow paths—ensuring complete coverage and consistent performance in real-world applications.



THE VAUGHAN SOLUTION

PROVEN CONDITIONING PUMP SOLUTIONS - TRUSTED SINCE 1960

From the first patented Chopper Pump to today's advanced conditioning and recirculating systems, Vaughan has led the industry in engineered mixing technology.

Each system applies Vaughan's proven chopping and mixing action to resuspend settled solids, eliminate floating mats, and condition wet wells for efficient pump-out—saving time, money, and maintenance.

Since 1960, facilities around the world have trusted Vaughan to keep their systems flowing with unmatched reliability.



APPLICATIONS

Vaughan Conditioning Pumps bring efficient solids management to a wide range of environments

- **Lift Station & Wet Well Conditioning** – Prevents solids buildup and odor formation
- **Digester & Tank Mixing** – Maintains uniform solids and reduces floating mats
- **Sludge, Scum & Grease Re-Suspension** – Keeps heavy and floating materials in motion
- **Basin & Channel Mixing** – Eliminates settling and stagnant zones
- **Industrial & Food Waste Conditioning** – Handles fibrous and high-solids waste streams



TRUSTED BY INDUSTRY PROFESSIONALS

Vaughan Conditioning Pumps are the trusted equipment of choice for the WEF Operations Challenge Maintenance Event, where top wastewater professionals demonstrate their skills on real-world maintenance challenges. Our continued role in this industry event reflects Vaughan's reputation for dependable equipment, responsive support, and a customer-first commitment recognized throughout the wastewater community.

MOUNTING, NOZZLE, & DRIVE OPTIONS

MOUNTING



TRADITIONAL

- Mobile Nozzle
- Move between multiple tanks



DOUBLE RAIL

- Permanent Install
- Easy removal for maintenance
- Non-spark options



SINGLE RAIL

- Mix at different liquid levels in tank
- Permanent install
- Non-spark options



SLOPED FLOOR

- For uneven wet-wells
- Fixed position installation bracket

NOZZLE



HORIZONTAL

- Low pit level



STRAIGHT

- Shallower tanks
- Mix settled solids and rags



UPAILED

- Entrained floating solids



SPLIT FLOW

- Dual purpose mixing and pump out

DRIVE OPTIONS



DRIVE OPTIONS

- Available with hydraulic or electric drive
- Hydraulic modes: power pack required, light weight design



CUSTOM NOZZLE OPTIONS

Vaughan evaluates each installation to ensure the most effective mixing design. When unique applications demand innovation, our engineers think beyond standard configurations—designing custom nozzle solutions that meet specific hydraulic, geometric, or performance requirements.

THE MIXING EXPERTS!

ENGINEERED SYSTEMS FOR PERMANENT AND CUSTOM CONDITIONING

Vaughan's engineered recirculator and valve systems are designed to optimize hydraulic performance in wet wells, pits, tanks, and dry pit applications. Each configuration delivers controlled mixing and re-suspension, ensuring complete solids management and dependable operation with minimal maintenance.



SUBMERSIBLE RECIRCULATOR

A fixed-position unit for long-term mixing and conditioning.

- Compact design fits existing guide rail systems
- Ideal for wet wells, digesters, and pits needing continuous flow
- Handles heavy solids without clogging



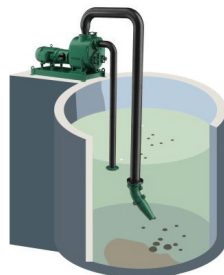
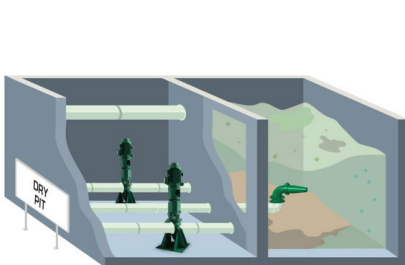
VERTICAL RECIRCULATOR

For deep or narrow pits requiring surface-mounted access.

- Vertical configuration suits uneven or sloped floors
- Adjustable nozzle targets multiple liquid levels
- Easy above-deck maintenance



DRY PIT CONDITIONING APPLICATIONS



Vaughan Chopper Pump technology can also serve dry pit systems, delivering powerful mixing in below-grade or basement installations.

- Integrates with existing piping for continuous recirculation
- Resuspends settled solids without submerged equipment
- Reduces manual cleanouts and maintenance cycles

VAUGHAN 3-WAY VALVE



The Vaughan 3-Way Valve, available in 4", 6", and 8" sizes, allows controlled flow for transfer or recirculation. Its non-plug, rotatable disc design can be operated manually or with an optional electric actuator.



Vaughan®

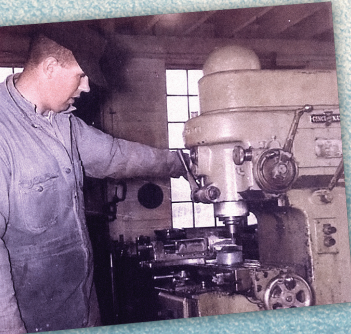
Unmatched Reliability

364 Monte Elma Road, Montesano, WA 98563 USA
Phone: (360)249-4042 • FAX: (360)249-6155 • US Toll Free: (888)249-2467

In the late 1950s, Jim Vaughan saw a need to help local Washington state farmers resolve clogged manure pumps. A true innovator at heart, Jim pushed beyond expectations to help his neighbors by inventing the world's first chopper pump. Now, since 1960, Vaughan Company remains committed to giving customers outstanding service and the most dependable product solutions in the world.

To maintain our position as the industry leader, Vaughan Company consistently asks the same question as our founder: "What could make this better?" Using innovative technology like our in-house, 3D computer modeling, we create exacting fits and precision castings for all components. We also meet with customers on a consistent basis to understand and resolve the latest issues in water management. The more we ask and innovate, the better we solve the challenges facing engineers and technicians across the globe.

While we have sales and support available worldwide, Vaughan Company remains "Made in America." All of our products are manufactured in the U.S., in our 140,000 sq. ft. Washington state manufacturing facility. We encourage both potential and current customers to reach out to us for details on eligibility for federal aid programs as well as to arrange plant tours.



Learn more about each of our products at ChopperPumps.com

VAUGHAN® Chopper Pumps

Wet Wells, Dry Wells, Submersibles,
Self-Primers, Recirculators



ROTAMIX® Process Mixing System

Tank and Digester Mixing



TRITON® Screw Centrifugal Pumps

Wet Wells, Dry Wells, Submersibles



Also Available

Floating Pumps, Mixers, Auger
Choppers, Vortex Choppers,
Produce Disposal Choppers



George KELSO Company, LLC
717-932-9980
info@kelsocompany.com
www.kelsocompany.com



Vendor# 329325